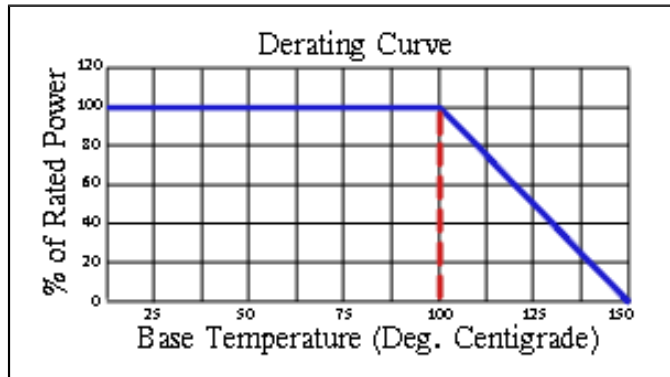
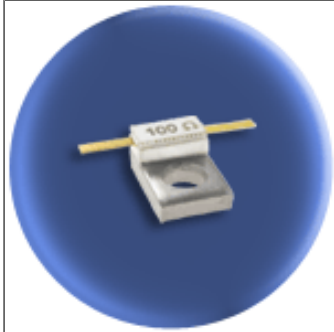


Component General, Inc.

P/N: CBR-10-1

Stripline Base Mounted Resistors



Mechanical Specifications

Covers:

Alumina Ceramic.

Substrate:

Beryllium Oxide Ceramic.

Contact:

Beryllium Copper, Gold Plated per MIL-G-45204.
Length: 0.125" Min., Width: 0.040",
Thickness 0.004" \pm 0.002".

Heat Sink:

Copper, Nickel Plated per QQ-N-290.

Tolerance:

\pm 0.010" unless specified.

Electrical Specifications

Resistance Value:

10 - 1000 Ω or as required. Other values available upon request.

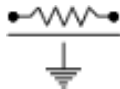
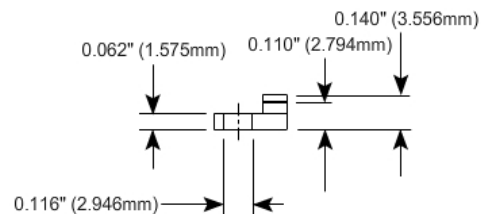
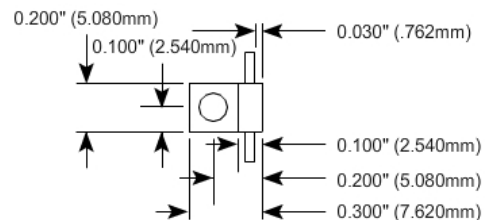
Standard Resistance Tolerance:

\pm 5% Other tolerances available upon request.

Frequency Range:

DC - 4.0 GHz

Part Dimensions



Note: The use of thermal mounting compound is recommended.