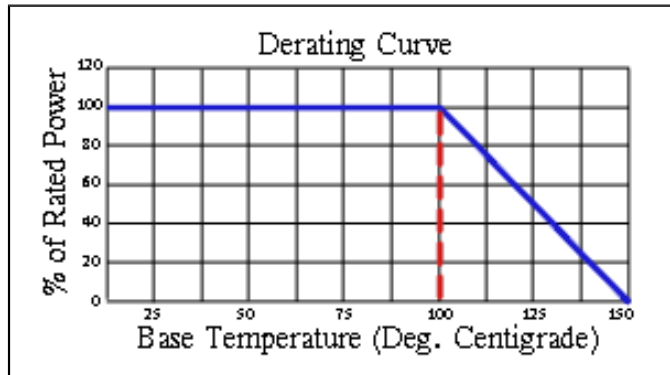
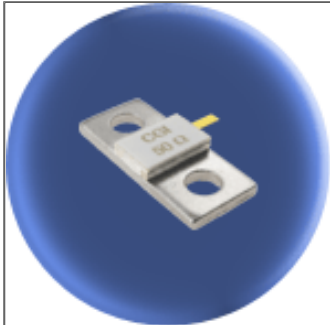


Component General, Inc.

P/N: CBT-150-5

Stripline Base Mounted Terminations



Mechanical Specifications

Covers:

Alumina Ceramic.

Substrate:

Beryllium Oxide Ceramic.

Contact:

Beryllium Copper, Gold Plated per MIL-G-45204. Length: 0.125" Min., Width: 0.060", Thickness 0.004" ± 0.002".

Heat Sink:

Copper, Nickel Plated per QQ-N-290.

Tolerance:

± 0.010" unless specified.

Electrical Specifications

Resistance Value:

10 - 1000 Ω or as required. Other values available upon request.

Frequency Range:

DC - 1.0 GHz
1.0 - 2.0 GHz
2.0 - 3.0 GHz

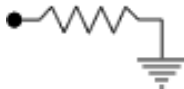
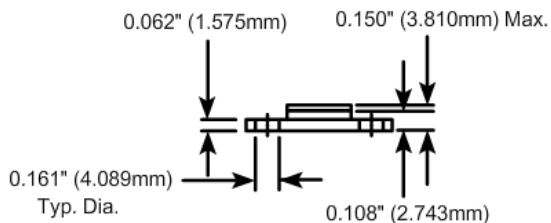
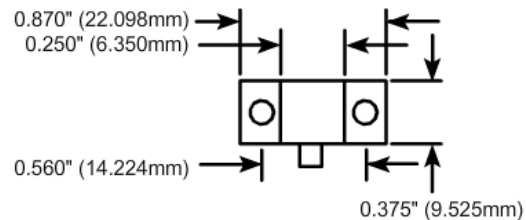
VSWR (Max.):

1.08:1
1.09:1
1.15:1

Standard Resistance Tolerance:

± 5% Other tolerances available upon request.

Part Dimensions



Note: The use of thermal mounting compound is recommended.