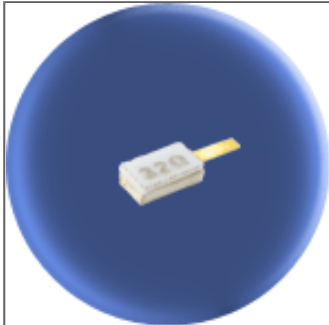


Component General, Inc.

P/N: CCT-100-2

Stripline Chip W/Cover Terminations



Mechanical Specifications

Substrate:

Beryllium Oxide Ceramic.

Contact:

Beryllium Copper, Gold Plated per MIL-G-45204. Length: 0.125" Min., Width: 0.040", Thickness 0.004" \pm 0.002".

Covers:

Alumina Ceramic.

Tolerance:

\pm 0.010" unless specified.

Electrical Specifications

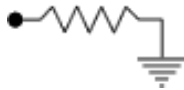
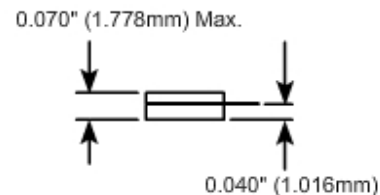
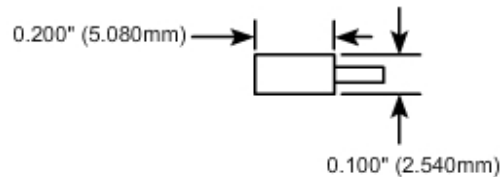
Resistance Value:

10 - 1000 Ω or as required. Other values available upon request.

Standard Resistance Tolerance:

5% Other tolerances available upon request.

Part Dimensions



Note: Power is based on infinite and ideal heat sink with the heat sink at 100°C