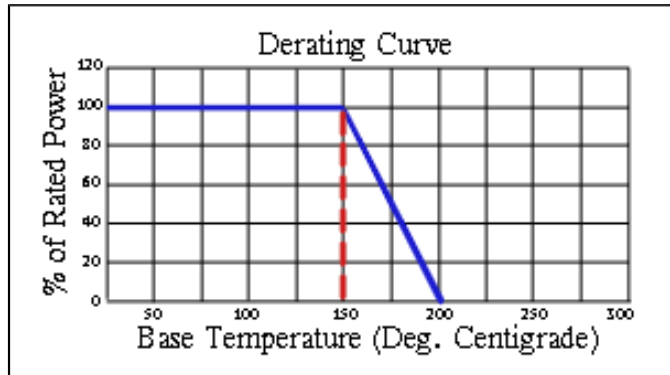
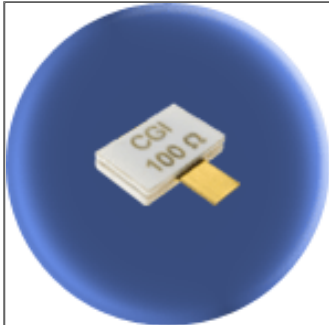


Component General, Inc.

P/N: CCT-230-2

Stripline Chip W/Cover Terminations



Mechanical Specifications

Substrate:

Beryllium Oxide Ceramic.

Contact:

Beryllium Copper, Gold Plated per MIL-G-45204.

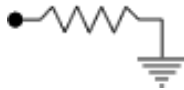
Length: 0.125" Min., Width: 0.120", Thickness 0.004" \pm 0.002".

Covers:

Alumina Ceramic.

Tolerance:

\pm 0.010" unless specified.



Note: Power is based on infinite and ideal heat sink with the heat sink at 100°C

Electrical Specifications

Resistance Value:

10 - 1000 Ω or as required. Other values available upon request.

Standard Resistance Tolerance:

\pm 5% Other tolerances available upon request.

Part Dimensions

