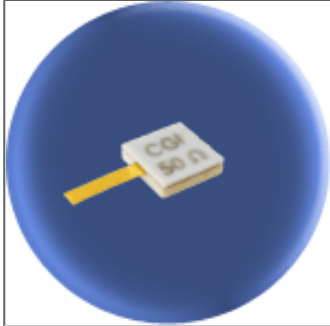


# Component General, Inc.

P/N: CCT-250-1

Stripline Chip W/Cover Terminations



## Mechanical Specifications

### Substrate:

Beryllium Oxide Ceramic.

### Contact:

Beryllium Copper, Gold Plated per MIL-G-45204.

Length: 0.125" Min., Width: 0.060", Thickness 0.004"  $\pm$  0.002".

### Covers:

Alumina Ceramic.

### Tolerance:

$\pm$  0.010" unless specified.

## Electrical Specifications

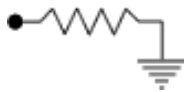
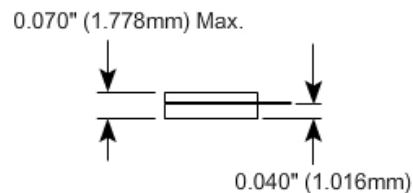
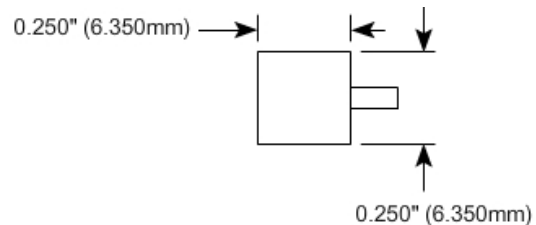
### Resistance Value:

10 - 1000  $\Omega$  or as required. Other values available upon request.

### Standard Resistance Tolerance:

$\pm$  5% Other tolerances available upon request.

## Part Dimensions



Note: Power is based on infinite and ideal heat sink with the heat sink at 100°C