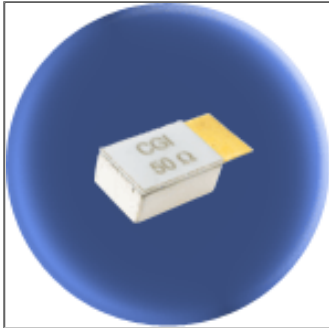


Component General, Inc.

P/N: CCT-250-2B

Stripline Chip W/Cover Terminations



Mechanical Specifications

Substrate:

Beryllium Oxide Ceramic.

Contact:

Beryllium Copper, Gold Plated per MIL-G-45204.

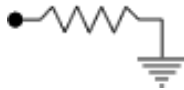
Length 0.125" Min., Width 0.250"
Thickness 0.004 ± 0.002 ".

Covers:

Alumina Ceramic.

Tolerance:

± 0.010 " unless specified.



Note: Power is based on infinite and ideal heat sink with the heat sink at 100°C

Electrical Specifications

Resistance Value:

10 - 1000 Ω or as required. Other values available upon request.

Standard Resistance Tolerance:

$\pm 5\%$ Other tolerances available upon request.

Part Dimensions

