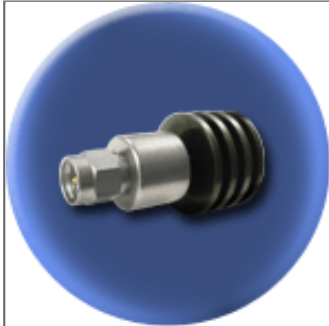


Component General, Inc.

P/N:CFT-05 SM

Coaxial Terminations



Electrical Specifications

Power Average: 5 W.	Frequency Range: DC - 6.0 GHz 6.0 - 12.0 GHz 12.0 - 18.0 GHz	VSWR (Max.): 1.15:1 1.25:1 1.35:1
Power Peak: 2.0 KW.	Impedance: 50 Ω	

Mechanical Specifications

Connector:

Stainless Steel, Passivated

Contact:

Tellurium Copper, Gold plated.

Housing :

Aluminum, Black Anodized.

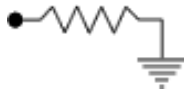
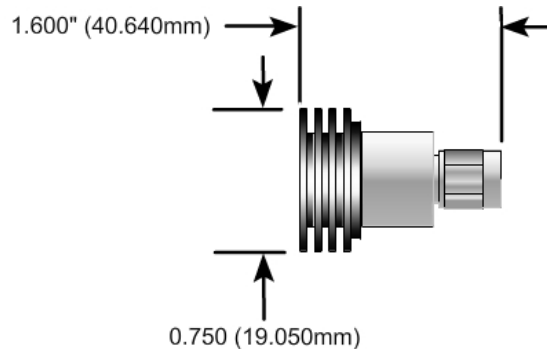
Insulator:

PTFE, Virgin grade.

Weight:

12.0 Grams.

Part Dimensions



the CHT Series high power coaxial terminations are conduction cooled loads. They are designed to be mounted on a heat sink ground plane or a chill plate. The power ratings require that the base plate of the cht-15-2 does not exceed 100°C or 85°C for all other sizes.



2445 Success Drive Odessa, FL 33556
727-376-6655 or 800-246-4084