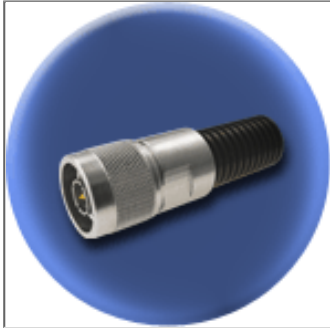


Component General, Inc.

P/N:CFT - 10 NM

Coaxial Terminations



Electrical Specifications

Average Power:

10 W.

Frequency Range:

DC - 6.0 GHz
6.0 - 12.4 GHz

VSWR (Max.):

1.20:1
1.30:1

Peak Power:

2.0 K W.

Impedance:

50 Ω

Mechanical Specifications

Connector:

Brass, Nickel plated.

Contact:

Brass, Silver plated .

Housing:

Aluminum, Black Anodized.

Insulator:

PTFE, Virgin grade.

Weight:

72.0 Grams.

Part Dimensions

