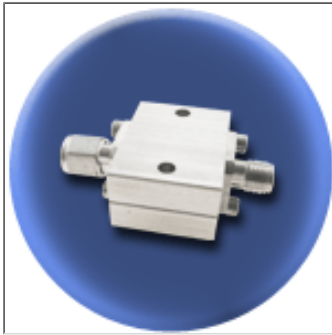


Component General, Inc.

P/N:CHA-20 SMF

Coaxial Attenuators



Attenuation Accuracy:

dB	DC - 1 GHz	1 - 2.5 GHz	2.5 - 4 GHz
1 - 5	± 0.5	± 0.5	± 0.5
6 - 9	± 0.5	± 0.5	± 1.0
10 - 15	± 0.75	± 1.0	± 1.5
16 - 20	± 1.0	± 2.0	± 3.0

Mechanical Specifications

Connector:

Brass, Nickel plated.

Housing:

Aluminum, Nickel plated per QQ-N-290.

Insulator:

PTFE, Virgin grade.

Environmental Specifications

Temperature Range:

-33° to +55° C (Operating with adequate heat sink)

Relative Humidity:

0 to 95% (Non-condensing)

Electrical Specifications

Input Power :

20 W. (CW,Max.)

Impedance:

50 Ω

Frequency Range:

DC - 1.0 GHz

1.0 - 2.5 GHz

2.5 - 4.0 GHz

VSWR (Max.):

1.15:1

1.35:1

1.50:1

Note: The power ratings are based on a maximum base temperature of 85° C, and derated linearly to zero at 150° C. The use of thermal mounting compound is recommended.

Part Dimensions

