

# Component General, Inc.

P/N:CHT - 250 NM

Coaxial Terminations



## Electrical Specifications

	Frequency Range:	VSWR (Max.):
<b>Power:</b>	DC - 200 MHz	1.15:1
150 W.	200 - 400 MHz	1.25:1
	400 - 800 MHz	1.30:1
<b>Impedance:</b>		
50 $\Omega$		

## Mechanical Specifications

### Contact:

Beryllium Copper, Gold plated.

### Connector:

Brass, Nickel plated.

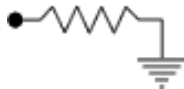
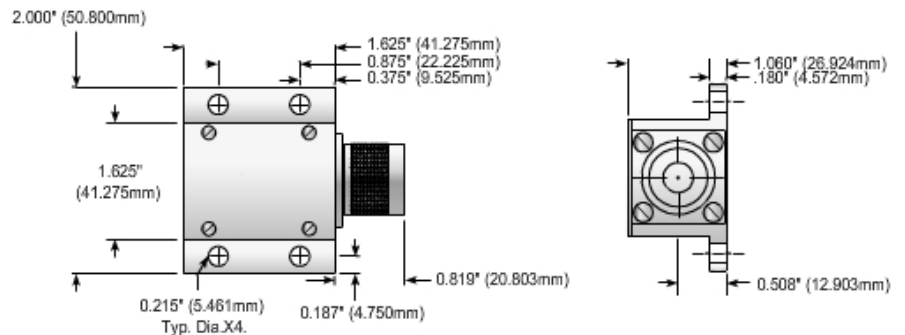
### Housing:

Copper, Nickel plated.

### Insulator:

PTFE, Virgin grade.

## Part Dimensions



The CHT Series high power coaxial terminations are conduction cooled loads. They are designed to be mounted on a heat sink ground plane or a chill plate. The power ratings require that the base plate of the CHT-15-2 does not exceed 100°C or 85°C for all other sizes.



2445 Success Drive Odessa, FL 33556  
727-376-6655 or 800-246-4084