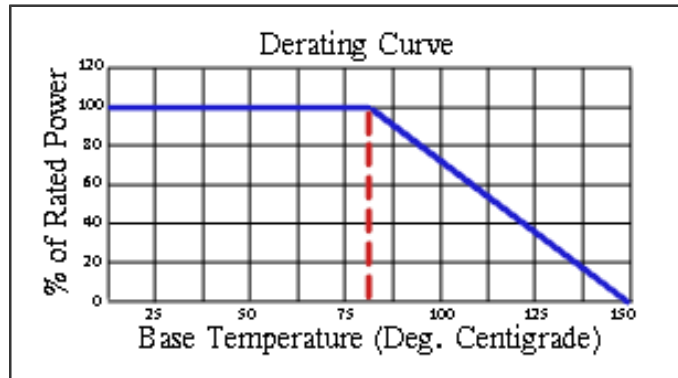
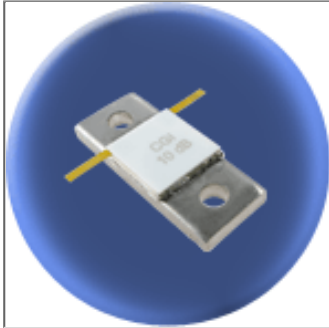


Component General, Inc.

P/N: CPA-100

Stripline Base Mounted Attenuators



Mechanical Specifications

Covers:

Alumina Ceramic.

Substrate:

Beryllium Oxide Ceramic.

Contact:

Beryllium Copper, Gold Plated per MIL-G-45204.

Length: 0.250" Min., Width: 0.060" Typ., Thickness 0.004" ± 0.002".

Heat Sink:

Copper, Nickel Plated per QQ-N-290.

Tolerance:

± 0.010" unless specified.

Electrical Specifications

Attenuation Values:

1 - 20 dB.

(Other dB values available upon request.)

Frequency Range: VSWR (Max.):

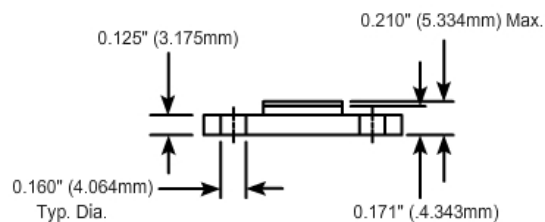
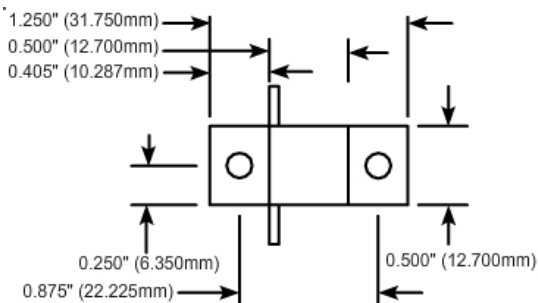
DC - 0.75 GHz

1.25:1

Input Power:

100 W

Part Dimensions



Attenuation Accuracy (dB)

DC - 0.75 GHz

+ 0.5



Note: The use of thermal mounting compound is recommended.