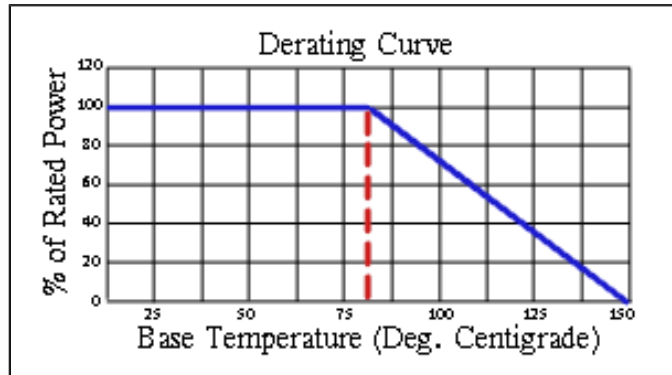
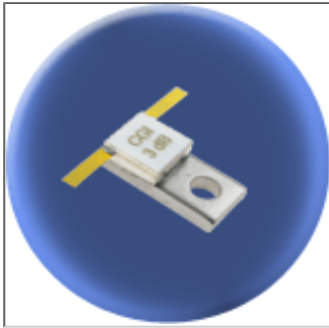


# Component General, Inc.

P/N: CPA-20

## Stripline Base Mounted Attenuators



### Mechanical Specifications

#### Covers:

Alumina Ceramic.

#### Substrate:

Beryllium Oxide Ceramic.

#### Contact:

Beryllium Copper, Gold Plated per MIL-G-45204.

Length: 0.250" Min., Width: 0.060"

Typ. ,

Thickness 0.004" ± 0.002".

#### Heat Sink:

Copper, Nickel Plated per QQ-N-290.

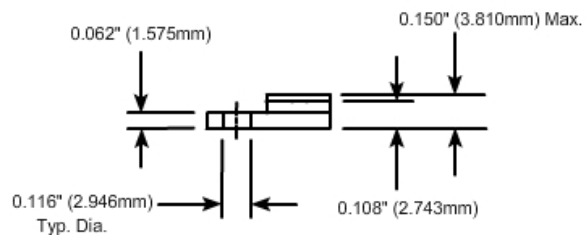
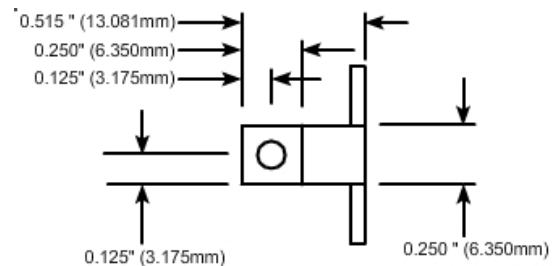
#### Tolerance:

± 0.010" unless specified.

### Attenuation Accuracy (dB)

dB	DC - 1 GHz	1 - 2.5 GHz	2.5 - 4 GHz
1 - 5	± 0.5	± 0.5	± 0.5
6 - 9	± 0.5	± 0.5	± 1.0
10 - 15	± 0.75	± 1.0	± 1.5
16 - 20	± 1.0	± 2.0	± 3.0

### Part Dimensions



### Electrical Specifications

#### Attenuation Values:

1 - 20 dB.

(Other dB values available upon request.)

#### Frequency Range: VSWR (Max.):

DC - 1.0 GHz 1.15:1

1.0 - 2.5 GHz 1.35:1

2.5 - 4.0 GHz 1.50:1

#### Input Power:

20 W

Note: The use of thermal mounting compound is recommended.

