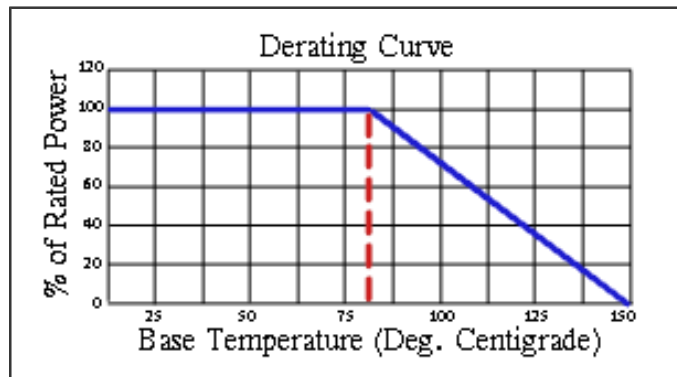
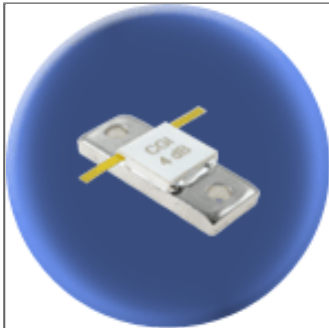


# Component General, Inc.

P/N: CPA-50

## Stripline Base Mounted Attenuators



### Mechanical Specifications

**Covers:**

Alumina Ceramic.

**Substrate:**

Beryllium Oxide Ceramic.

**Contact:**

Beryllium Copper, Gold Plated per MIL-G-45204.

Length: 0.250" Min.,

Width: 0.060" Typ.,

Thickness 0.004" ± 0.002".

**Heat Sink:**

Copper, Nickel Plated per QQ-N-290.

**Tolerance:**

± 0.010" unless specified.

### Electrical Specifications

**Attenuation Values:**

1 - 20 dB.

(Other dB values available upon request.)

**Frequency Range:**

DC - 0.5 GHz

0.5 - 1.0 GHz

**VSWR (Max.):**

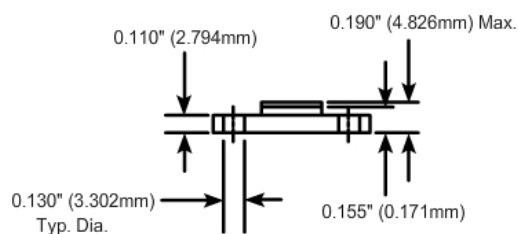
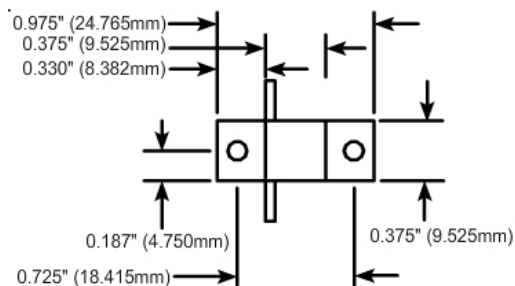
1.15:1

1.20:1

**Input Power:**

50 W

### Part Dimensions



### Attenuation Accuracy (dB)

DC - 0.5 GHz	+ 0.3
0.5 - 1.0 GHz	+ 0.5



Note: The use of thermal mounting compound is recommended.