

# Component General, Inc.

## ■ Stripline Base Mounted Attenuators

### ■ MECHANICAL SPECIFICATIONS



Heat Sink : Copper, Nickel Plated per QQ-N-290.

Substrate : Beryllium Oxide Ceramic.

Contact : Beryllium Copper, Gold Plated per MIL-G45204.

Cover : Alumina Ceramic.

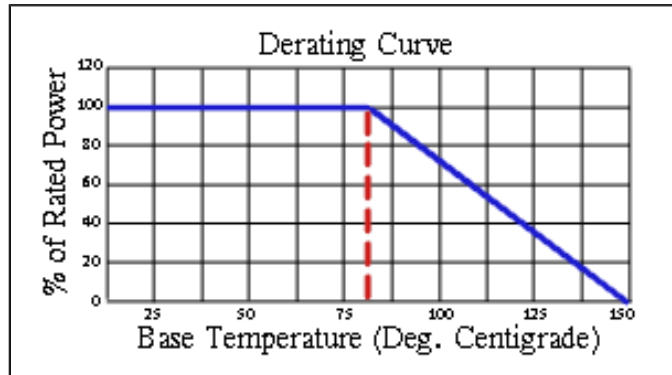
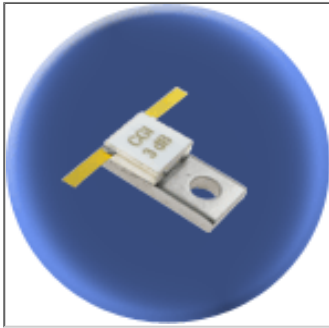
Tolerance :  $\pm$  .010" Unless specified.

high power Attenuators product selection chart					
CGI P/N	Power	Impedance	Frequency Range	VSWR	Attenuation Values
Note: Click a part number from the list below to see a data sheet for that part.					
<a href="#">CPA-20</a>	20 W	50 $\Omega$	DC - 1.0 GHz 1.0 - 2.5 GHz 2.5 - 4.0 GHz	1.15:1 1.35:1 1.50:1	1 to 20 dB
<a href="#">CPA-50</a>	50 W	50 $\Omega$	DC - .500 GHz .500 - 1.0 GHz	1.15:1 1.20:1	1 to 20 dB
<a href="#">CPA-100</a>	100 W	50 $\Omega$	DC - .750 GHz	1.25:1	1 to 20 dB

# Component General, Inc.

P/N: CPA-20

## Stripline Base Mounted Attenuators



### Mechanical Specifications

#### Covers:

Alumina Ceramic.

#### Substrate:

Beryllium Oxide Ceramic.

#### Contact:

Beryllium Copper, Gold Plated per MIL-G-45204.

Length: 0.250" Min., Width: 0.060"

Typ. ,

Thickness 0.004" ± 0.002".

#### Heat Sink:

Copper, Nickel Plated per QQ-N-290.

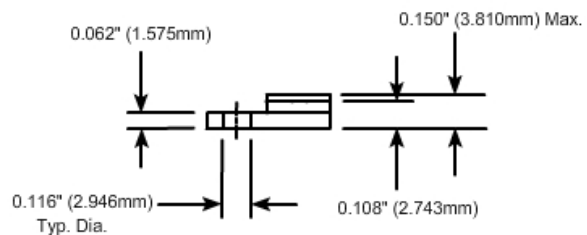
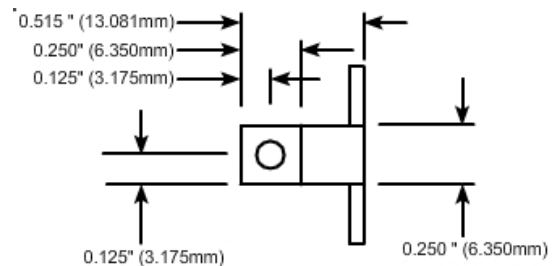
#### Tolerance:

± 0.010" unless specified.

### Attenuation Accuracy (dB)

dB	DC - 1 GHz	1 - 2.5 GHz	2.5 - 4 GHz
1 - 5	± 0.5	± 0.5	± 0.5
6 - 9	± 0.5	± 0.5	± 1.0
10 - 15	± 0.75	± 1.0	± 1.5
16 - 20	± 1.0	± 2.0	± 3.0

### Part Dimensions



### Electrical Specifications

#### Attenuation Values:

1 - 20 dB.

(Other dB values available upon request.)

#### Frequency Range: VSWR (Max.):

DC - 1.0 GHz 1.15:1

1.0 - 2.5 GHz 1.35:1

2.5 - 4.0 GHz 1.50:1

#### Input Power:

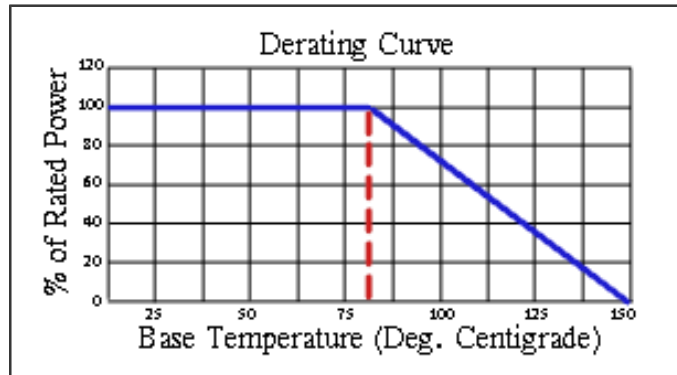
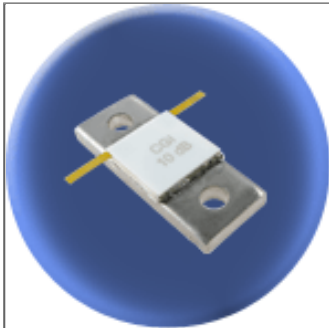
20 W

Note: The use of thermal mounting compound is recommended.

# Component General, Inc.

P/N: CPA-100

## Stripline Base Mounted Attenuators



### Mechanical Specifications

**Covers:**

Alumina Ceramic.

**Substrate:**

Beryllium Oxide Ceramic.

**Contact:**

Beryllium Copper, Gold Plated per MIL-G-45204.

Length: 0.250" Min., Width: 0.060" Typ. ,

Thickness 0.004" ± 0.002".

**Heat Sink:**

Copper, Nickel Plated per QQ-N-290.

**Tolerance:**

± 0.010" unless specified.

### Electrical Specifications

**Attenuation Values:**

1 - 20 dB.

(Other dB values available upon request.)

**Frequency Range: VSWR (Max.):**

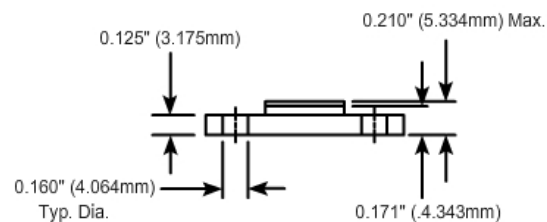
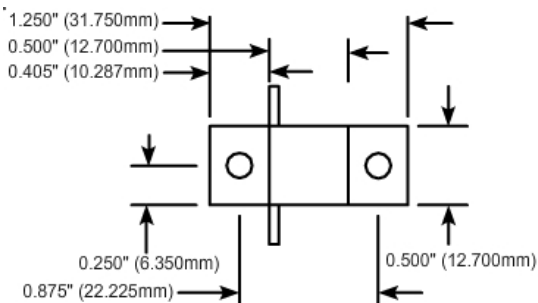
DC - 0.75 GHz

1.25:1

**Input Power:**

100 W

### Part Dimensions



### Attenuation Accuracy (dB)

DC - 0.75 GHz

+ 0.5

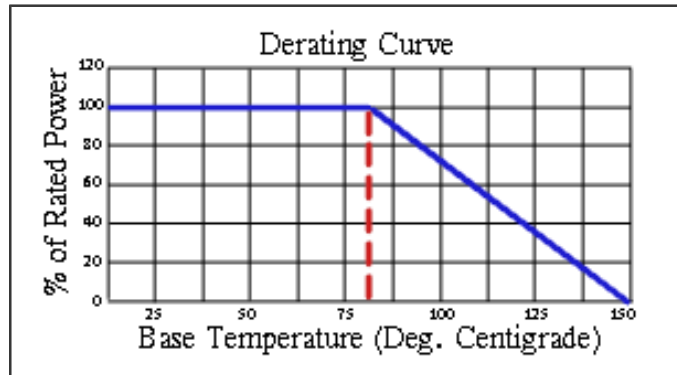
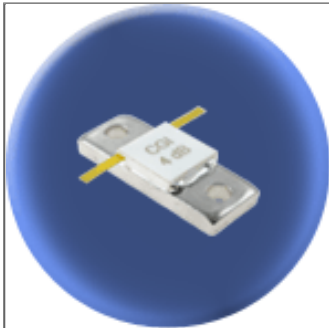


Note: The use of thermal mounting compound is recommended.

# Component General, Inc.

P/N: CPA-50

## Stripline Base Mounted Attenuators



### Mechanical Specifications

**Covers:**

Alumina Ceramic.

**Substrate:**

Beryllium Oxide Ceramic.

**Contact:**

Beryllium Copper, Gold Plated per MIL-G-45204.

Length: 0.250" Min.,

Width: 0.060" Typ. ,

Thickness 0.004" ± 0.002".

**Heat Sink:**

Copper, Nickel Plated per QQ-N-290.

**Tolerance:**

± 0.010" unless specified.

### Electrical Specifications

**Attenuation Values:**

1 - 20 dB.

(Other dB values available upon request.)

**Frequency Range:**

DC - 0.5 GHz

0.5 - 1.0 GHz

**VSWR (Max.):**

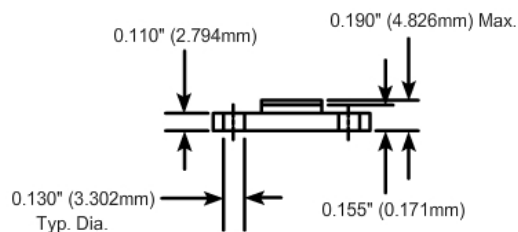
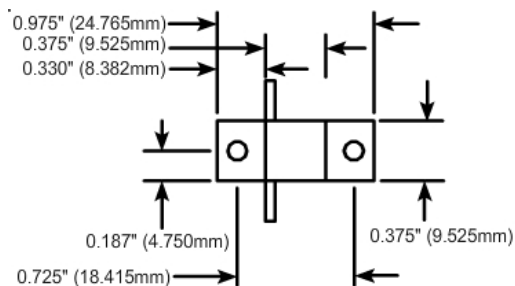
1.15:1

1.20:1

**Input Power:**

50 W

### Part Dimensions



### Attenuation Accuracy (dB)

DC - 0.5 GHz	+ 0.3
0.5 - 1.0 GHz	+ 0.5



Note: The use of thermal mounting compound is recommended.